

## St Laurence Centre

Situated in the heart of the Borough of Lewisham, **St Laurence Centre** is a purpose-built community hub that has been serving the people of Lewisham and Catford for 50 years.

Recently refurbished, the Main Hall welcomes up to 200 people for a conference, performance, or reception; or 160 people seated comfortably at tables. It has a fully equipped commercial kitchen so you can do your own catering, or use caterers.

The Jubilee Room and Coffee Bar can each hold up to 50 people. The Youth Room can hold up to 40 people.

All rooms have excellent natural daylight, and the Jubilee Room and Youth Room have good blackout; there is stair-free access to all parts of the building with access to facilities for making or serving refreshments. We have on-site parking and disabled toilet facilities.

We offer use of a basic projector, stand and screen; flipcharts and dry-wipe boards at no extra cost, and, we can offer basic refreshments at a minimal cost.

Prices are kept low to make this valuable resource available for local groups and local people (with substantial discounts available to registered charities), while the high standard of accommodation makes our unique venue suitable for professional and commercial organisations.

St Laurence Centre is also appropriate for religious ceremonies of all faiths.

We aim to give a relaxed but professional service to everyone who comes to St Laurence.

## THE MAIN HALL

*A large, light-filled space with seating for up to 80 people (until end of 2021) and 120 people from 2022*



### Available as standard

- Commercial kitchen
- Stage for presentations
- Rectangular tables for flexible arrangements
- Wireless broadband access
- Cutlery and crockery for 120 guests



The Central Hall has a noise limiter set at 95 decibels to enable us to host events but be considerate to our neighbours.

## THE JUBILEE ROOM

*A comfortable meeting room seating up to 40 guests with excellent privacy*



- Kitchen and servery
- Built-in overhead projector screen

## THE COFFEE BAR

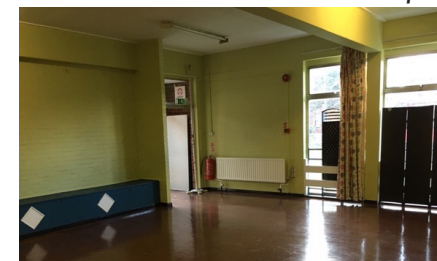
*A flexible space with good natural lighting*



- Comfortably seats 40 guests
- Also useful as an activity or break-out area
- Kitchen and servery

## THE YOUTH ROOM

*A smaller and more economical space*



This robustly furnished and equipped room is ideal for youth work, physical activity, or training sessions.

# St Laurence Centre

In addition to these four main spaces, we also have the following area available for hire:

## OUTDOOR ACTIVITY AREA

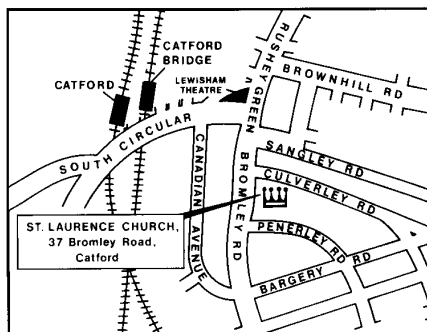
A large outdoor tarmac area, floodlit at night, for tennis, five-a-side football and other sports.

It is ideal for training and team-building exercises.

## How to find us

**37, Bromley Road, Catford, London SE6 2TS**

St Laurence Centre is close to the crossroads of the South Circular (A205) and the A21 in the heart of Catford.



We are easily accessible by train (**Catford** and **Catford Bridge** stations are five minutes' walk) and a dozen bus routes pass through the centre of Catford. We are near Lewisham Town Hall, and are 15 minutes' walk from Lewisham Hospital.

## For bookings and all enquiries

Phone – **020 8698 9706**

Email – [manager@stlaurencecatford.org.uk](mailto:manager@stlaurencecatford.org.uk)

Visit our website: [www.stlaurencecentre.org.uk](http://www.stlaurencecentre.org.uk)

## Our rates

### MAIN HALL

Monday to Friday

Hourly rate £50

Saturday and Sunday:

Hourly rate £60

The Main Hall requires the additional payment of a refundable deposit of £500 for Mon-Fri and £600 for Saturday.

### SMALLER ROOMS

JUBILEE ROOM

COFFEE BAR

YOUTH ROOM

Monday to Friday

Hourly rate £13

£13

£10

Saturday and Sunday:

Hourly rate £15

£15

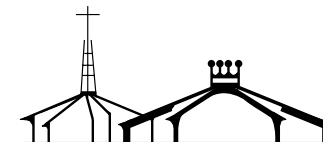
£12

The Jubilee Room, Coffee Bar and Youth Room each require the additional payment of a refundable deposit of £75, £100 or £250 dependent on duration of hire.



## St Laurence Centre

A venue for meetings, conferences, receptions, functions, training days



Flexible, friendly, accessible, and at the heart of Catford

